

*Unforgotten*



Written by (+ draft drawings):

BROWN Noam

CAMPBELL Camille

HADJEE Elrick

HERLAND Nicolas

LARBOUI Elias

LEFEBVRE MILON Eloïse

LIRON Grégoire

MARTIN Juliette

NDZINA MINARET Saïan

PARMA Jade

PARMA Pearl

PIERROT DESEILLIGNY Solange

RASTIER Théo

WOIRGARD Arela

Illustrated by:

PIERROT DESEILLIGNY Solange

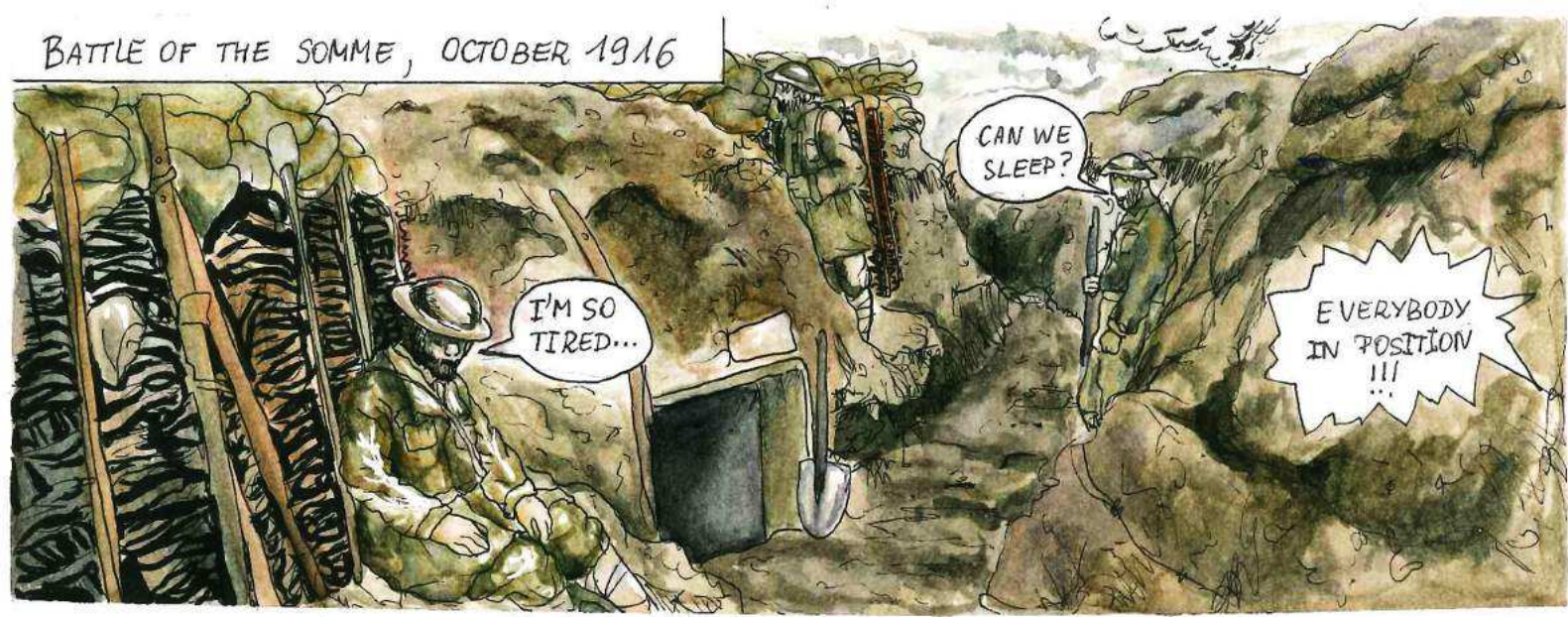
3<sup>ème</sup> A, 3<sup>ème</sup> B, International section

Collège WATTEAU

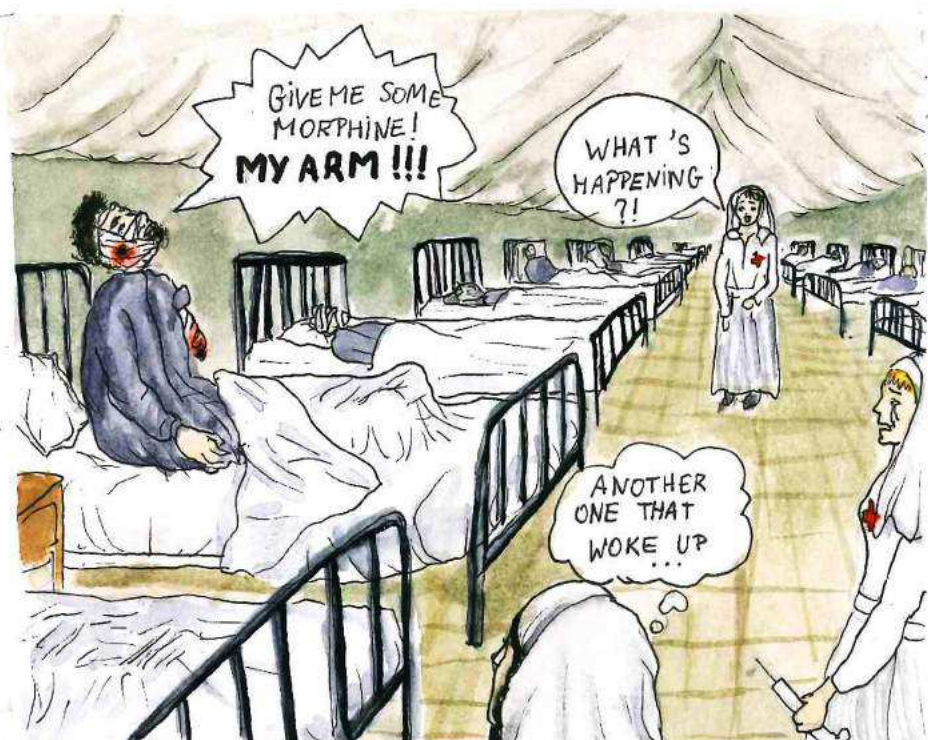
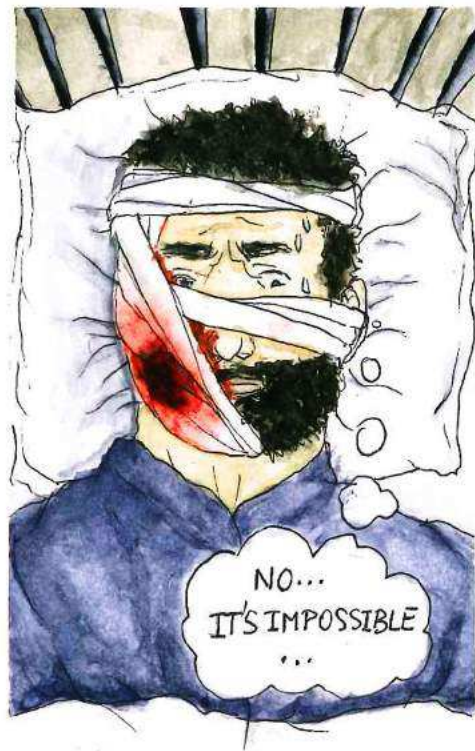
NOGENT SUR MARNE, FRANCE



BATTLE OF THE SOMME, OCTOBER 1916









A FEW WEEKS LATER

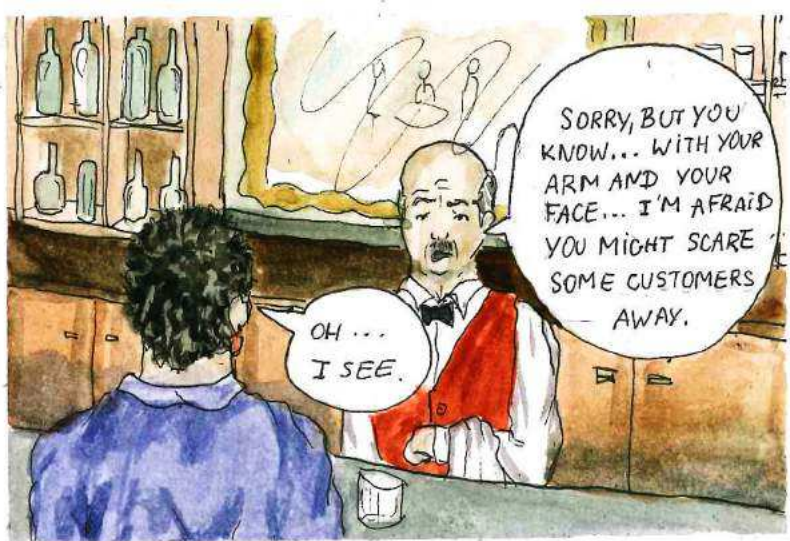
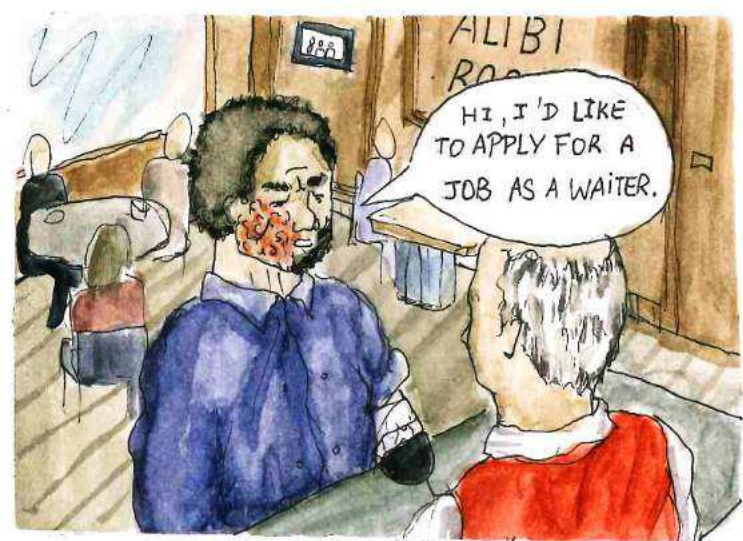


LONDON STATION



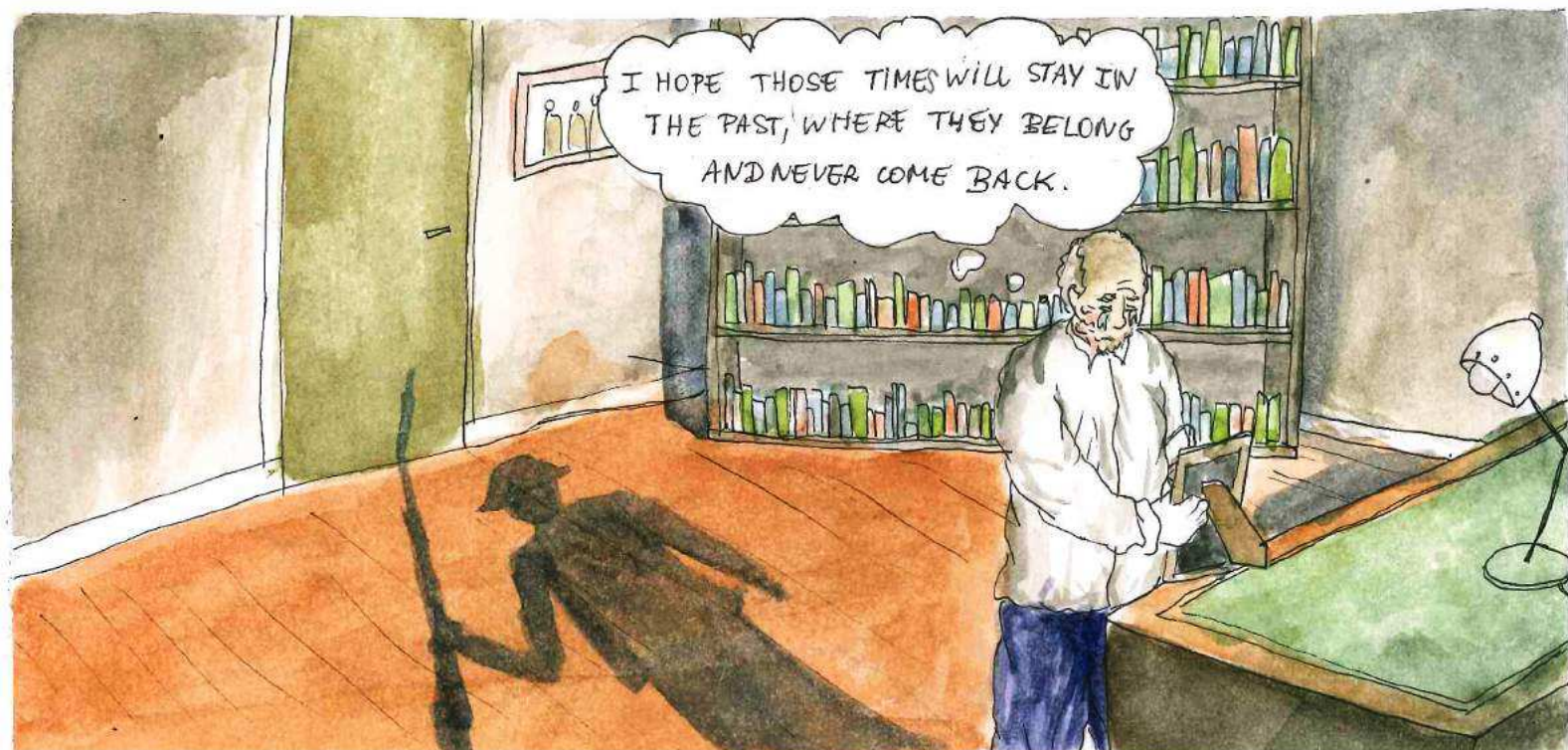
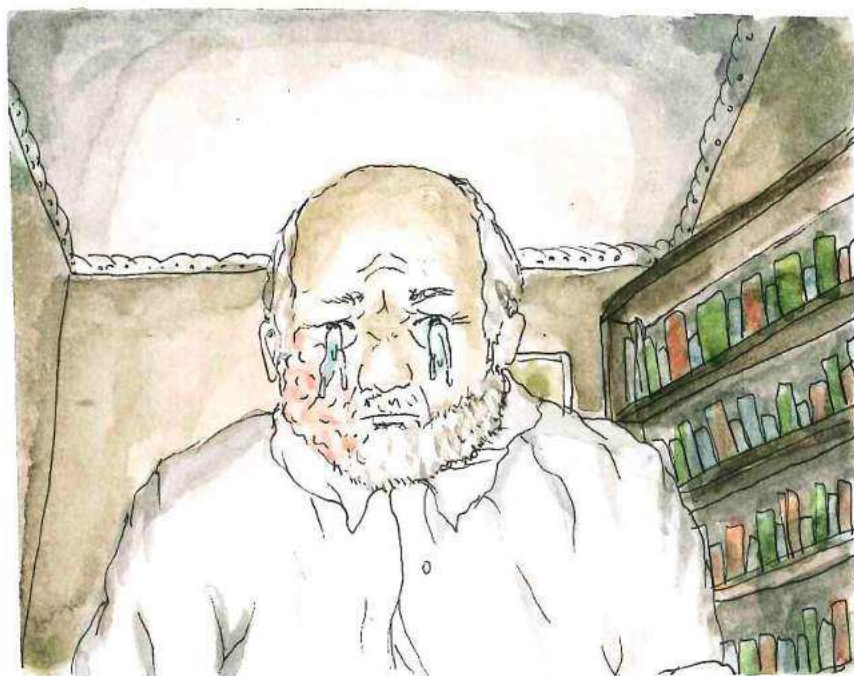
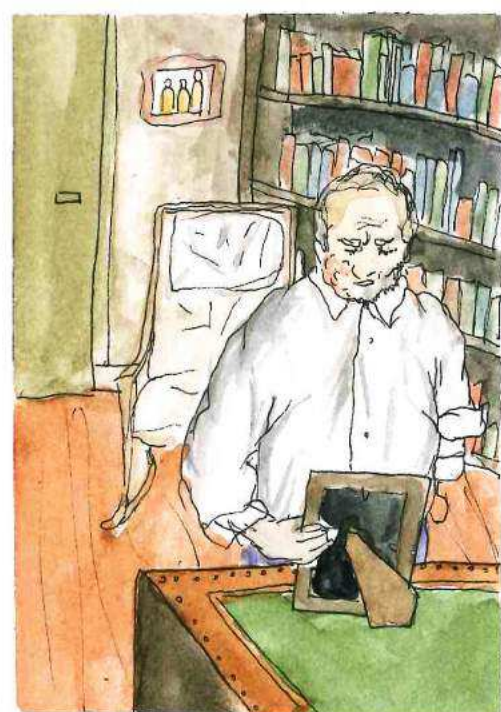
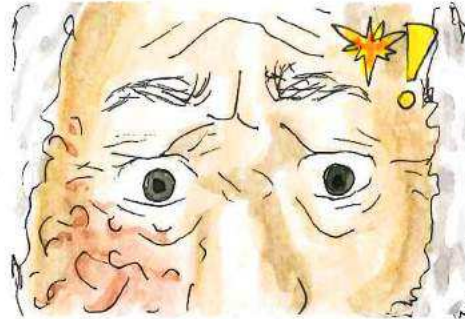
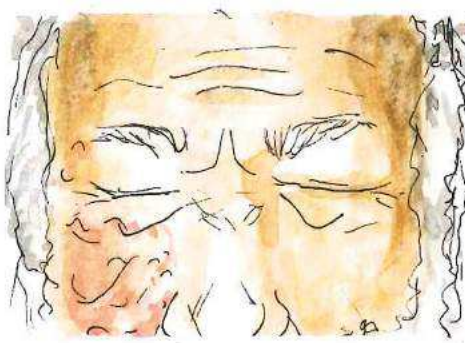
JOB OFFER  
waiter required  
RESTAURANT  
The Alibi room  
11 street of  
Paddington







TIME HAS PAST ...





# L'histoire de la bataille de la Somme

La bataille de la Somme a opposé les Français et les Britanniques aux Allemands au Nord de la France en 1916. La bataille débute le 1<sup>er</sup> juillet 1916. Elle a été une des plus meurtrières de la Première Guerre Mondiale ainsi que la Bataille de Verdun. Il y a eu environ 1 060 000 victimes dont 442 000 morts. Le premier jour a été particulièrement difficile pour l'armée britannique sachant qu'elle a perdu 58 000 soldats dont 19 240 morts. Ce fut la première offensive alliée des Britanniques et des Français. Pendant la bataille de la Somme, deux inventions ont vu le jour : le char d'assaut, et le cinéma. Un film, *La Bataille de la Somme* a été tourné pendant les premiers jours de la bataille et a permis de capturer les violences d'une guerre de tranchées. L'armée française était commandée par le Général Foch et l'armée britannique par le Maréchal Haig. La bataille se termine le 18 novembre 1916 à cause des conditions climatiques qui rendaient compliqué le combat.



# The story of the battle of the Somme

The battle of the Somme had the French and British soldiers fighting against the Germans, in the north of France in 1916. The battle starts the 1st of July 1916. This battle was one of the most deadly of World War 1, along with the battle of Verdun. There were around 1 060 000 victims of which 442 000 dead. The 1st day had been particularly difficult for the British army knowing that they lost 58 000 soldiers of which 19 240 had died. It was the offensive alliance between the French and British armies. During the battle of the Somme, tanks were first created and the cinema had just been invented. A British film, *The Battle of the Somme*, was filmed during the first few days of the battle and was able to capture the violence of trench warfare. The French army was commanded by the General Foch and the British army by the Marshall Haig. The battle ends on the 18th of November 1916 because of the weather conditions which complicated the fight.



In memory of  
these 10 million sacrificed